

Sec. 26

T.5N. 7-21-83 (45)

U.P.R.R. R.1 W.

π @ P.T. 26F (B.L.M.)

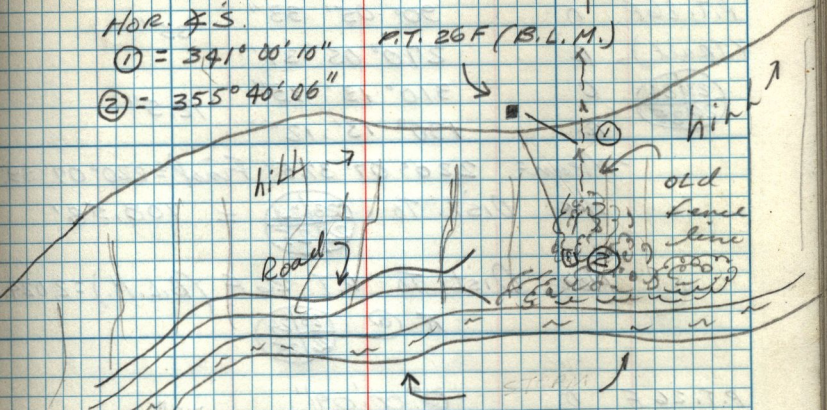
B.S.  $\frac{26}{35} \frac{25}{36}$

Hor. & S.

① =  $341^{\circ} 00' 10''$

② =  $355^{\circ} 40' 06''$

P.T. 26F (B.L.M.)



Hor. Dist. Ts

① = 21.85'

② = 90.55'